



In conjunction with
The Associated General Contractors of America



For more information, visit athenium.com/construction
 or contact us by email at construction@athenium.com



GaugeConstruction

Understand your weather risk.
 Mitigate valuable lost time.
 Plan with confidence.

Weather Risk Analysis

- Weekly breakdown of weather risk profile based on 40+ years of historic weather data
- Weather risk profile specific to the construction site's geography, construction phase and relevant perils

Lost Days Tools

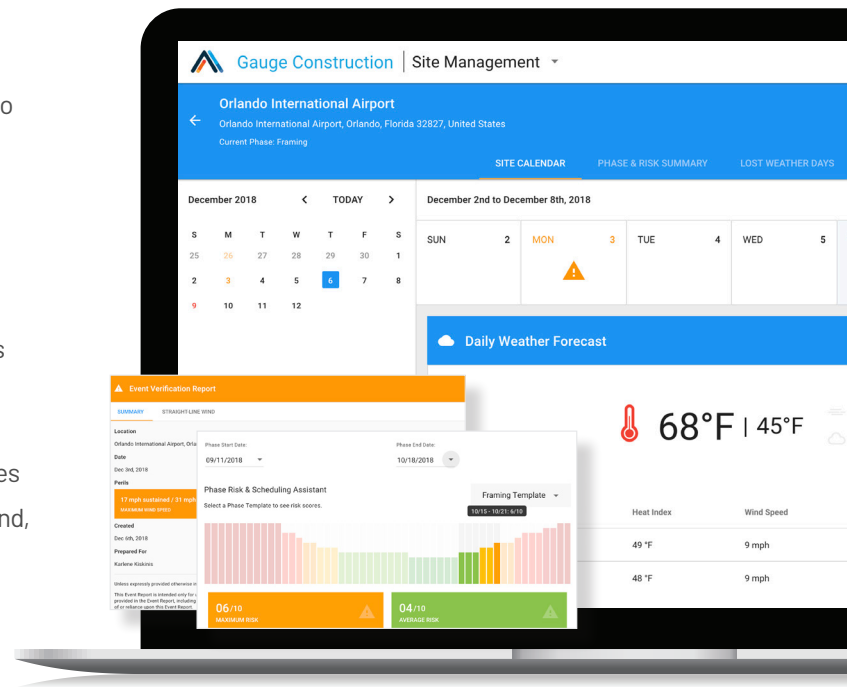
- Precise calculation of lost weather days before the project begins based on site-specific historical weather data
- User-configurable thresholds allow for calculations unique to each project
- Hyper-local weather verification tool with 0.6 x 0.6 mi data for claims against Lost Days

Weather Data for Construction

- 40+ years of weather insights accurately calculate Lost Days and assess weather risk before starting a project
- Unique weather risks for the different stages of construction: excavation, foundation, framing and enclosures
- Downloadable daily weather summaries for temperature, wind, precipitation and hail extremes

Forecast Alerts

- Proprietary weather models used in configurable 7-day forecast alerts for hail, rainfall, freezing rain, snowfall, cold, heat, heat index and wind gusts
- Machine-learning hurricane superensemble provides 10-day forecast



About Athenium Analytics

Athenium Analytics delivers powerful, cloud-based tools to help organizations measure, mitigate and manage complex risk. Learn more by contacting a sales representative at (888) 320-7693 or visit us at athenium.com.